

Pepperl+Fuchs GmbH – Königsberger Allee 87 – 68307 Mannheim - Germany

**Please quote the following contact information when publishing:**

Tel.: +49 621 776-2222, Fax: +49 621 776-27-2222, [www.pepperl-fuchs.com](http://www.pepperl-fuchs.com), [pa-info@de.pepperl-fuchs.com](mailto:pa-info@de.pepperl-fuchs.com)

Editorial contact: Christa Blas (extension: -1420, fax: -1108), [cblas@de.pepperl-fuchs.com](mailto:cblas@de.pepperl-fuchs.com)

## **Pepperl+Fuchs provides FieldConnex fieldbus infrastructure to Rabigh Integrated Refining and Petrochemical Complex**

**Pepperl+Fuchs has been chosen as the exclusive supplier in one of the largest fieldbus projects in the world, Rabigh Integrated Refining and Petrochemical Complex (PETRORabigh)**

**Mannheim, Germany (June 2007)** - Pepperl+Fuchs with its FieldConnex<sup>®</sup> range of fieldbus interface solutions has been selected as the main FOUNDATION fieldbus supplier to Yokogawa and the global EPC for this prestigious project. Pepperl+Fuchs will offer its fully redundant Power Hub system with Advanced Diagnostic Module (ADM). This powerful ADM will allow PETRORabigh to access a commissioning wizard that automatically documents and establishes alarm limits as well as a performance historian. As a result, PETRORabigh will be able to audit and record fieldbus loops during commissioning with a snapshot feature saving repetitive and labor-intensive work. The snapshots will provide vital data during future troubleshooting and maintenance procedures. The implementation of FieldConnex will result in the highest possible availability of the fieldbus system and long-term OPEX savings.

Pepperl+Fuchs will also provide equipment on the field side, namely Segment Protectors. These smart wiring blocks protect the fieldbus segment and thus plant operation from short circuits. Live-working on field instruments is permitted without hot work permit, netting in superior plant availability. The FieldConnex range is completely designed and manufactured by Pepperl+Fuchs ensuring their customers' long term success.

## **About Pepperl+Fuchs – Protecting your Process**

Pepperl+Fuchs delivers electronic instrumentation for the automation market. With over 3,400 employees in more than 30 countries to design, produce and distribute products, we are located where our customers need us. The Process Automation Division is the market leader for intrinsic safety interfaces and hazardous location equipment. Our FieldConnex® Fieldbus Installation System provides highest flexibility to modern process automation applications, the BEBCO EPS Purge & Pressurization System offers protection for any kind of instrumentation. This comprehensive range of explosion protection systems is complemented by further leading-edge technologies such as EXTEC Visualization and Operation Systems, Separator Alarm Systems, Level and Corrosion Monitoring devices and, of course, our world-wide support services. Pepperl+Fuchs is the recognized expert in our technologies and we have earned this reputation by supplying the world's largest process industry companies with the broadest line of proven components for a diverse range of applications.

Authors: Shane Parr, Regional Sales Director Asia Pacific  
Andreas Hennecke, Product Marketing Manager Fieldbus Technology  
Division Process Automation

Characters: 2,337, without space characters

Pictures: No. 93-1228-18, No. 93-1228-12, No. 93-1107-63, No. 93-1113-62

June 2007

For royalty-free for publications.



Fig. 1 (93\_1228\_18):

The Advanced Diagnostic Module brings transparency to fieldbus communication

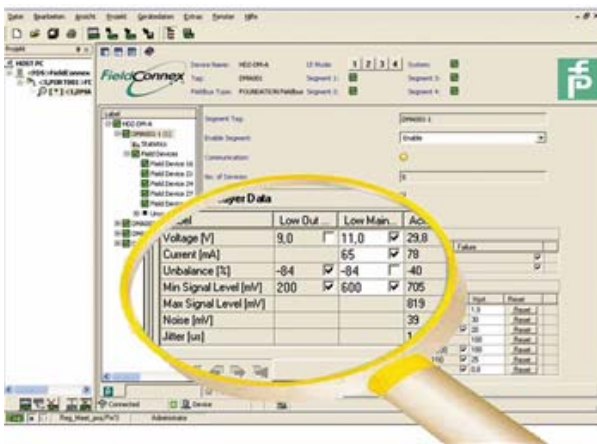


Fig. 2 (93\_1228\_12):

Diagnostic Manager: Makes fieldbus easy to operate and quick to respond to. Detailed physical layer measurements per device and per segment with history and alarm functions.

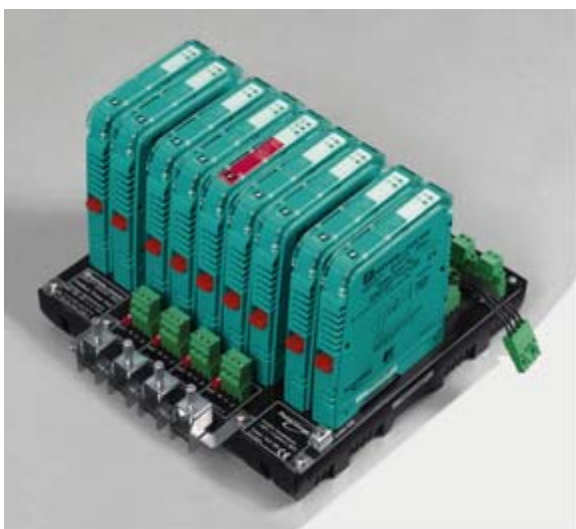


Fig. 3 (93\_1107\_63):

Redundant Power Hub provide highest availability for FOUNDATION Fieldbus H1 segments.



Fig. 4 (93\_1113\_62):

Latest technology Segment Protector: Short circuit protection included. And a choice of spur connections for fieldbus distribution 4 to 12 spurs.